



**UniSpace**

**SUNDERLAND**

MEETINGS TRAINING  
CONFERENCES EVENTS

# National Glass Centre

Located on our campus at St Peter's, with stunning views across the river Wear, National Glass Centre is home to our internationally renowned Glass and Ceramics programmes and is a visitor attraction providing unique events, group activities and banqueting experiences for up to 200 people

Offering added value through glass blowing activities and contemporary exhibitions organisers can also commission our Hot Glass Studio to produce finishing touches or mementos of their occasion or any event.

## PLUS POINTS:

ARCHITECTURALLY UNUSUAL VENUE

ADDED VALUE ACTIVITY

OUTSIDE EVENT SPACE

RIVERSIDE LOCATION

GOOD PUBLIC TRANSPORT LINKS

ADJACENT TO OTHER VENUES AT ST PETER'S

SELF CONTAINED BUILDING

VISITOR RECEPTIONS

ONSITE CAR PARKING

ONSITE BRASSERIE AND HOSPITALITY FACILITIES

ACCESSIBLE

STANDARD AV AND IT INCLUDED

FREE WIFI

SUBSTANTIAL SOCIAL SPACE

VISITOR ATTRACTION



## Travel

Nearest Airport: **Newcastle International Airport**

Nearest Metro Station: **St Peter's**  
(The Metro runs directly to Sunderland from Newcastle International Airport)

Nearest Railway Station: **Sunderland City Centre**

Nearest Motorway: **A1(M)**

Sat. nav. details: **SR6 OGL**

Grand Central Trains operate a direct service to Sunderland from London King's Cross.

**[www.grandcentralrail.co.uk](http://www.grandcentralrail.co.uk)**

Rail services operate from many other UK cities to Sunderland.

East Coast - **[www.eastcoast.co.uk](http://www.eastcoast.co.uk)**

Cross Country Trains - **[www.crosscountrytrains.co.uk](http://www.crosscountrytrains.co.uk)**

Transpennine Express - **[www.texpress.co.uk](http://www.texpress.co.uk)**

Northern Rail - **[www.northernrail.org](http://www.northernrail.org)**

Contact: **UniSpace Sunderland,**  
**University of Sunderland, St Peter's Gate,**  
**Charles Street, Sunderland SR6 OGL**  
Tel: **0191 515 2666**  
Email: **[unispace@sunderland.ac.uk](mailto:unispace@sunderland.ac.uk)**

**[www.unispacesunderland.com](http://www.unispacesunderland.com)**



National Glass Centre  
is part of the University  
of Sunderland



**University of  
Sunderland**

# National Glass Centre

## Venue specifications

### Meeting room facilities

	Theatre	U shape	Boardroom	Cabaret / groups	Banqueting
Pod	45	20	22	20	30
Riverside Room	200	50	55	80	150
Riverside Room A	120	30	32	50	80
Riverside Room B	60	20	24	40	45
National Glass Centre Brasserie	n/a	n/a	n/a	n/a	100

### Other areas

	Floor level	Natural light	Floor area (m <sup>2</sup> )	Length (metre)	Width (metre)	Height (max) (metre)	Height (min) (metre)
Entrance Foyer	1	yes	188.15	17.07	8.70	3.01	
National Glass Centre Brasserie	lower floor	yes	268.02	19.58	10.71	5.13	4.43

### Room specifications

	Floor level	Natural light	Floor area (m <sup>2</sup> )	Length (metre)	Width (metre)	Height (max) metres	Height (min) metres
Pod	upper floor	yes	65.20	12.30	5.30	-	-
Riverside Room	upper floor	yes	409.70	24.80	17.20	-	-
Riverside Room A	upper floor	yes	125.40	11.00	11.40	-	-
Riverside Room B	upper floor	yes	80.04	13.80	5.80	-	-

### We also offer the following services:

- Photocopying
- Faxing
- Printing of documents for conferences from memory sticks

Contact: **UniSpace Sunderland**,  
**University of Sunderland, St Peter's Gate,**  
**Charles Street, Sunderland SR6 0GL**  
 Tel: **0191 515 2666**  
 Email: **unispace@sunderland.ac.uk**

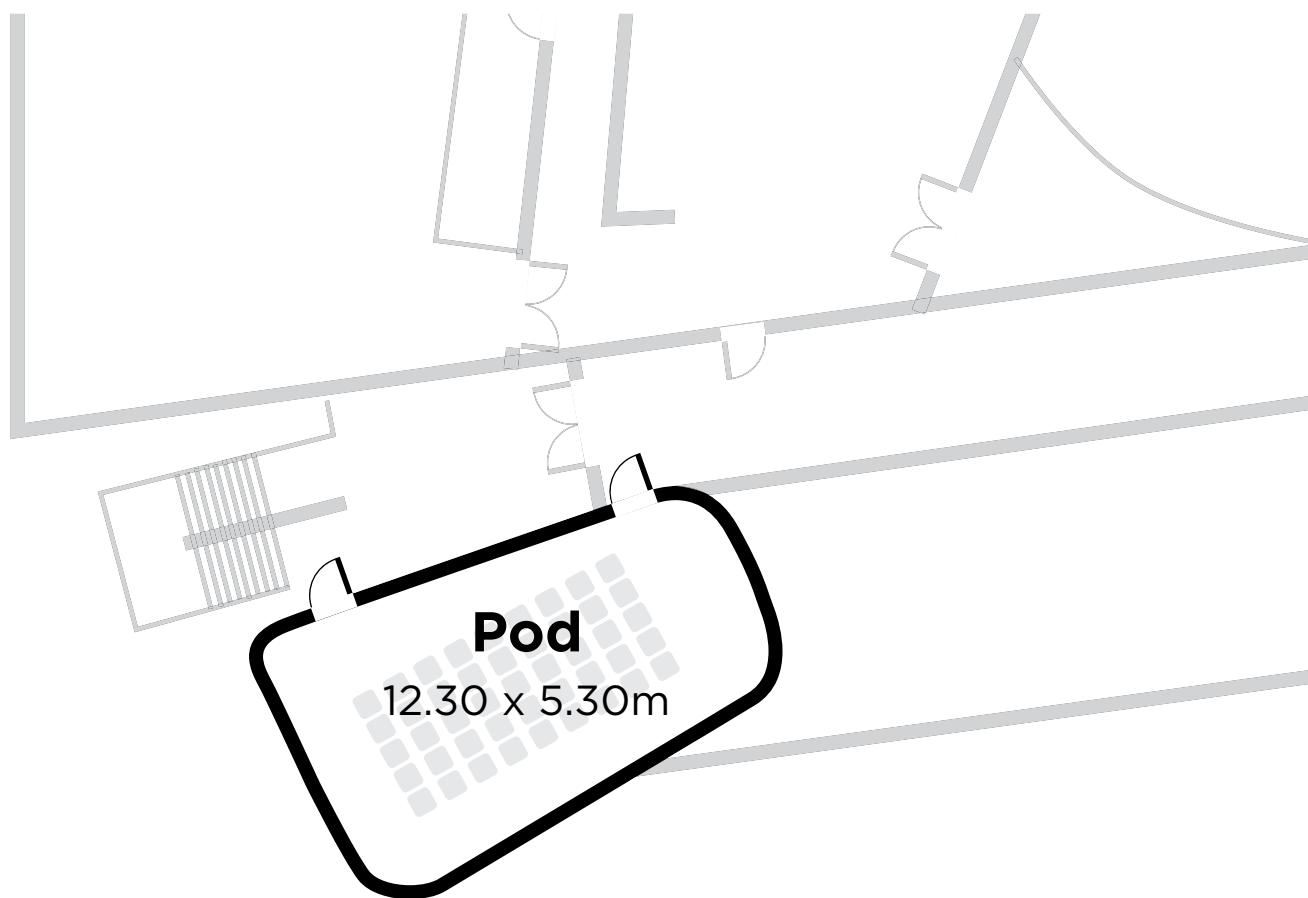
**www.unispacesunderland.com**



National Glass Centre  
 is part of the University  
 of Sunderland



**University of  
 Sunderland**



Theatre	U shape	Boardroom	Cabaret / groups	Banqueting
45	20	22	20	30

Floor level	Natural light	Floor area (m <sup>2</sup> )	Length (metre)	Width (metre)	Height (max) metres	Height (min) metres
upper floor	yes	65.20	12.30	5.30	-	-

Contact: **UniSpace Sunderland**,  
**University of Sunderland, St Peter's Gate,**  
**Charles Street, Sunderland SR6 OGL**  
 Tel: **0191 515 2666**  
 Email: **unispace@sunderland.ac.uk**

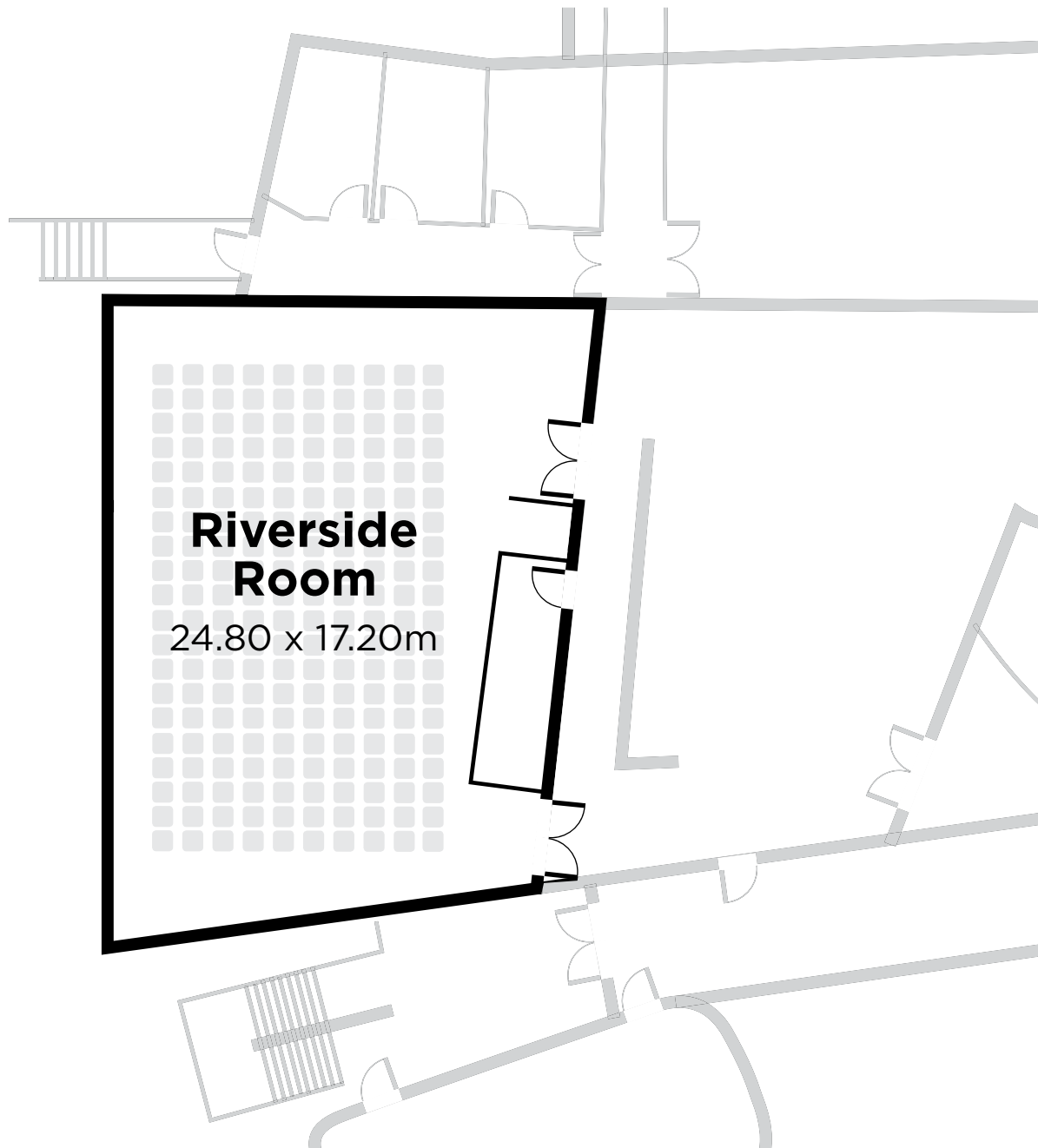
**[www.unispacesunderland.com](http://www.unispacesunderland.com)**



National Glass Centre  
 is part of the University  
 of Sunderland



**University of  
 Sunderland**



Theatre	U shape	Boardroom	Cabaret / groups	Banqueting		
200	50	55	80	150		
Floor level	Natural light	Floor area (m <sup>2</sup> )	Length (metre)	Width (metre)	Height (max) metres	Height (min) metres
upper floor	yes	409.70	24.80	17.20	-	-

Contact: **UniSpace Sunderland**,  
**University of Sunderland, St Peter's Gate,**  
**Charles Street, Sunderland SR6 OGL**  
 Tel: **0191 515 2666**  
 Email: **unispace@sunderland.ac.uk**

**[www.unispacesunderland.com](http://www.unispacesunderland.com)**



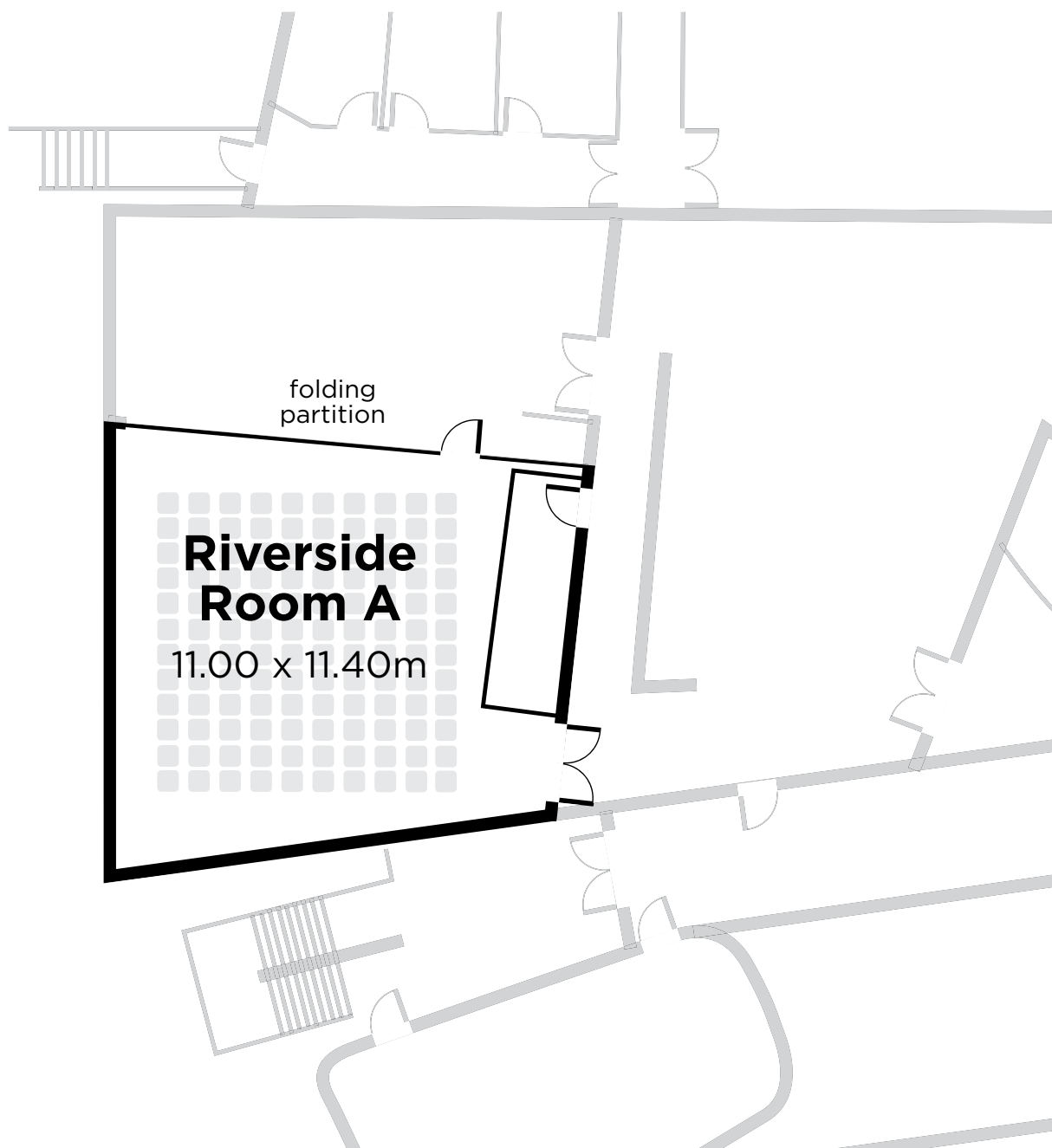
National Glass Centre  
 is part of the University  
 of Sunderland



**University of  
 Sunderland**

# National Glass Centre Riverside Room A

Meeting room



Theatre	U shape	Boardroom	Cabaret / groups	Banqueting		
120	30	32	50	80		
Floor level	Natural light	Floor area (m <sup>2</sup> )	Length (metre)	Width (metre)	Height (max) metres	Height (min) metres
upper floor	yes	125.40	11.00	11.40	-	-

Contact: **UniSpace Sunderland**,  
**University of Sunderland, St Peter's Gate,**  
**Charles Street, Sunderland SR6 OGL**  
 Tel: **0191 515 2666**  
 Email: **unispace@sunderland.ac.uk**

**www.unispacesunderland.com**



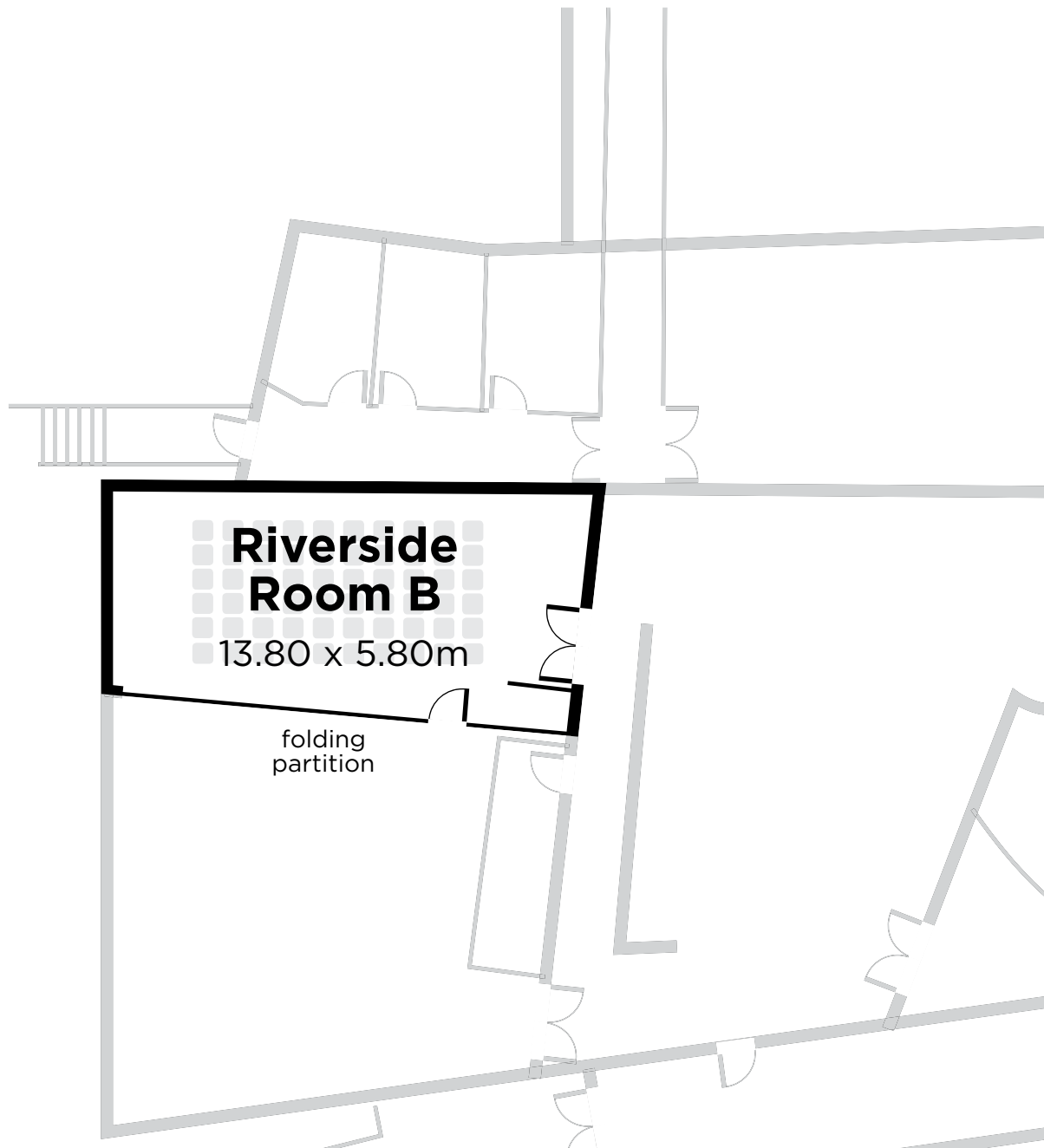
National Glass Centre  
 is part of the University  
 of Sunderland



**University of  
 Sunderland**

# National Glass Centre Riverside Room B

Meeting room



Theatre	U shape	Boardroom	Cabaret / groups	Banqueting		
60	20	24	40	45		
Floor level	Natural light	Floor area (m <sup>2</sup> )	Length (metre)	Width (metre)	Height (max) metres	Height (min) metres
upper floor	yes	80.04	13.80	5.80	-	-

Contact: **UniSpace Sunderland**,  
**University of Sunderland, St Peter's Gate,**  
**Charles Street, Sunderland SR6 OGL**  
 Tel: **0191 515 2666**  
 Email: **unispace@sunderland.ac.uk**

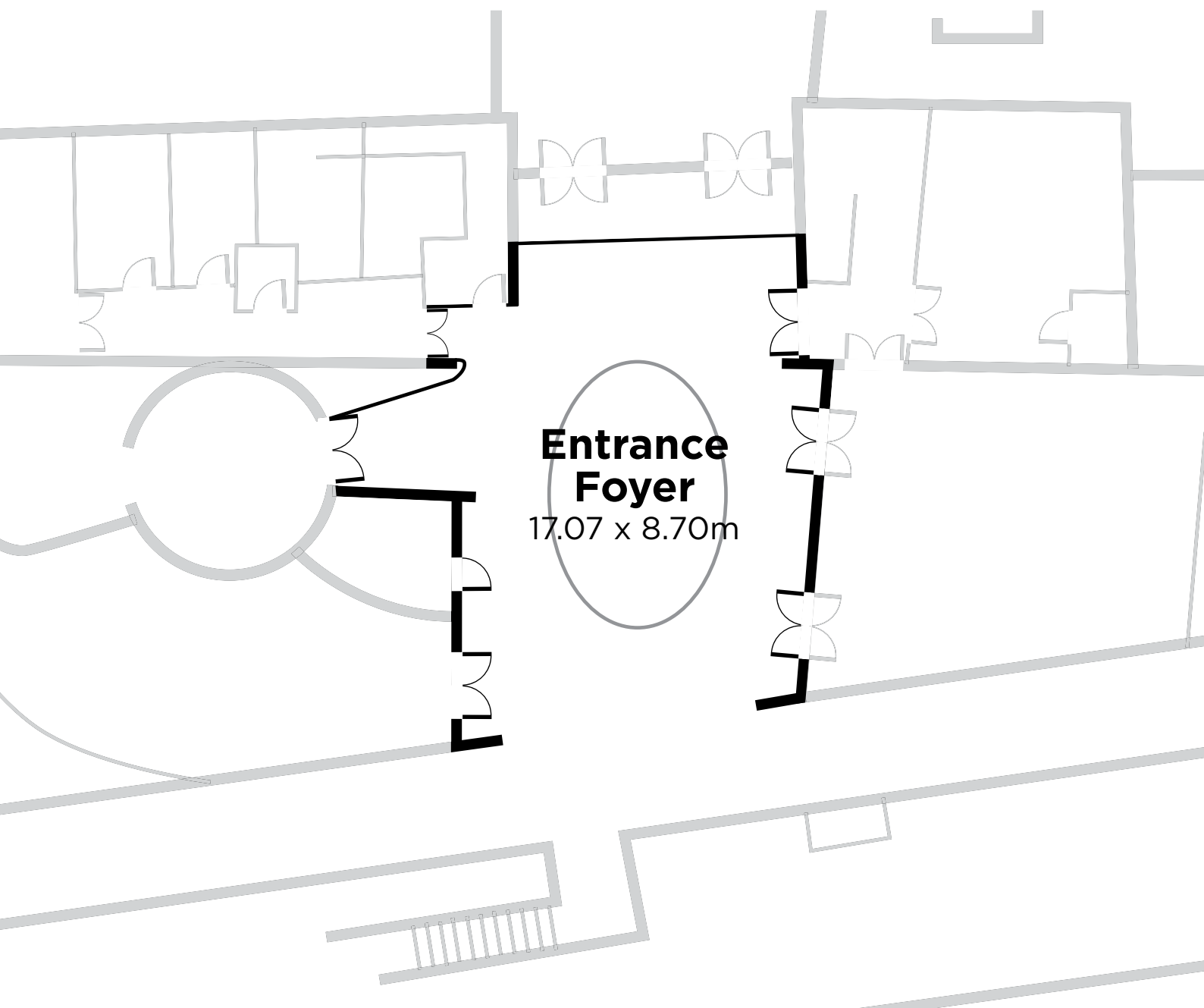
**[www.unispacesunderland.com](http://www.unispacesunderland.com)**



National Glass Centre  
 is part of the University  
 of Sunderland



**University of  
 Sunderland**



Floor level	Natural light	Floor area (m <sup>2</sup> )	Length (metre)	Width (metre)	Height (max) (metre)	Height (min) (metre)
upper floor	yes	188.15	17.07	8.70	3.01	-

Contact: **UniSpace Sunderland**,  
**University of Sunderland, St Peter's Gate,**  
**Charles Street, Sunderland SR6 OGL**  
Tel: **0191 515 2666**  
Email: **unispace@sunderland.ac.uk**

**[www.unispacesunderland.com](http://www.unispacesunderland.com)**



National Glass Centre  
is part of the University  
of Sunderland



**University of  
Sunderland**

# National Glass Centre National Glass Centre Brasserie



## National Glass Centre Brasserie

19.58 x 10.71m

Floor level	Natural light	Floor area (m <sup>2</sup> )	Length (metre)	Width (metre)	Height (max) (metre)	Height (min) (metre)
lower floor	yes	268.02	19.58	10.71	5.13	4.43

Contact: **UniSpace Sunderland**,  
**University of Sunderland, St Peter's Gate,**  
**Charles Street, Sunderland SR6 OGL**  
Tel: **0191 515 2666**  
Email: **unispace@sunderland.ac.uk**

**[www.unispacesunderland.com](http://www.unispacesunderland.com)**



National Glass Centre  
is part of the University  
of Sunderland



**University of  
Sunderland**