

# ELM GROVE CONFERENCE CENTRE – RATE CARD

## Creating Inspiring Moments

Elm Grove offers a **modern, flexible contemporary** meeting space at **competitive rates**.

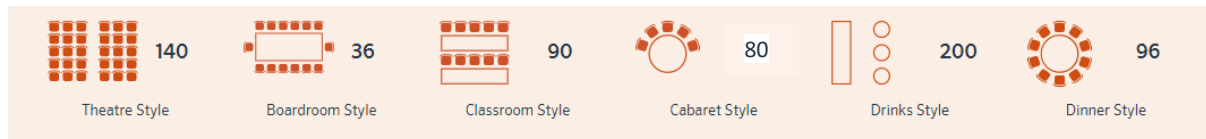
All our meeting rooms feature **state-of-the-art audio-visual equipment** and our team are on-site whenever you need their support.



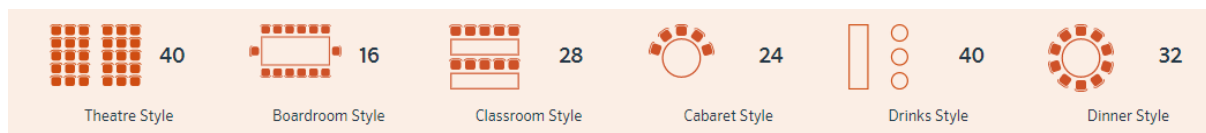
### OAK SUITE



This **modern conference space** seats up to **140 theatre-style** and offers event planners the option to divide into **three separate rooms**. With **magnetic walls** and **98 inch plasma screens** for presentations, the rooms are the perfect environment for any conference or event. The AV within the rooms is controlled from **keypad touch systems** giving the speaker the flexibility to relay all presentations throughout the suite or on certain screens. An **inbuilt sound system** with handheld and label microphones is also included.



Oak suite capacity when split into three rooms of the following capacity;



<b>OAK SUITE – all 3 adjoining</b>	<b>OAK SUITE – Single room</b>	<b>DDR</b>	<b>½ Day DDR</b>	<b>24hr DDR</b>
<b>£1200</b>	<b>£500</b>	<b>£45</b>	<b>£25</b>	<b>£145</b>

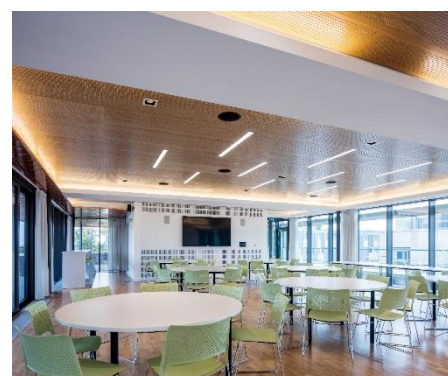
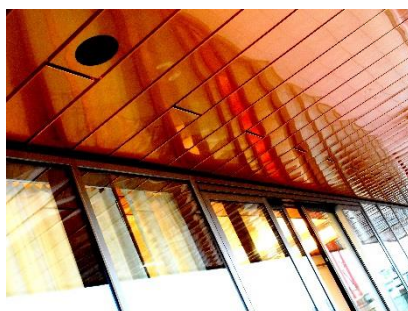
All prices exclusive of VAT

#### DDR inclusions




- **Room Hire** for main meeting room
- Start the day with **tea coffee and pastries and fruit skewers**
- **Morning & afternoon serving of tea coffee and cookies** for the morning, **flapjack, chocolate brownies and healthy boost bars** for afternoon
- **Gourmet sandwich lunch served with salads, crisps and fresh fruit**
- **Mineral Water & Bottle Green Drinks**
- **98" Plasma Screen, SMART PC, lectern, roving and label mics and flipchart**
- **Conference stationery**

## LIME TREE SUITE

This **versatile space** gives clients the option to host lunches, dinners or even exhibitions. The suite leads out onto our **copper roofed terrace**, with views across to the iconic London skyline. This spectacular space will give all your guests plenty to talk about.




<b>LIME TREE</b>	<b>½ Day DDR</b>
<b>£750</b>	<b>£25</b>

 <b>100</b>	 <b>100</b>	 <b>150</b>
Theatre Style	Dinner Style	Drinks Style

## BOARDROOMS – Tulip & Maple

Seating up to ten guests, and featuring built in AV equipment, this boardroom is perfect for executive meetings or team meetings and can also be used as an additional breakout space.



Capacity	
	<b>10</b>
Boardroom Style	

<b>BOARDROOM</b>	<b>DDR</b>
<b>£300</b>	<b>£45</b>

## BEDROOMS

**30 en-suite** guest bedrooms situated in our Elm Grove Conference Centre. All bedrooms are en-suite with small double bed, tea coffee making facilities, hair dryer, television, iron and ironing board and complimentary wi fi.

Staying at Elm Grove offers guests **ease of access into central London** or stay closer to SW15 and enjoy the local attractions such as Richmond Park the Royal Botanic Gardens in Kew, Wimbledon Tennis Courts and Museum, and the London Wetland Centre in Barnes.

**B&B RATE (min. 10)**

**£67.50**



## LOCATION

- **University of Roehampton, London. SW15 5PH**
- **Just outside London** – close to Barnes Station. Next to Richmond Park. 17 minutes on train from Waterloo